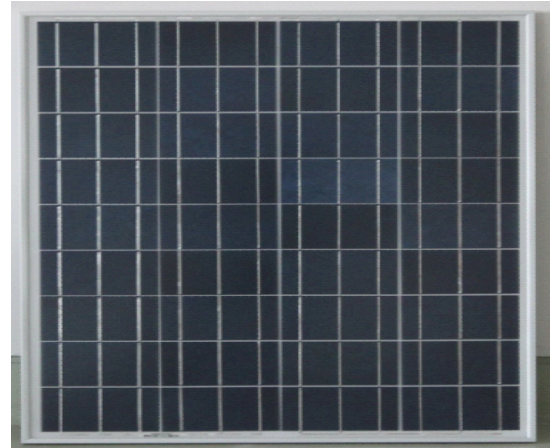


Features

- High conversion efficiency
- Low power tolerance of 0~+3%
- Low degradation under light exposure
- Can withstand high wind-pressure, snow load and extreme temperature
- Passing IEC 61215 2400Pa mechanical load test

Quality and Safety

- 10-year warranty on product materials and processing technology
- Power output warranty:10 years:90%,25 years:80%
- ISO 9001:2008(Quality Management System) certified factory
- IEC61215,IEC61730 ,MCS CEC certified products
- TUV,CE conformity



Applications

- On-grid residential roof-tops
- On-grid commercial/industrial roof-tops
- Solar power plants
- Off-grid system
- Other on-grid applications



Specificatio

Model Type	ODA55-18-P
Peak Power(Pmax)	55.00
Maximum Power Voltage(Vmp)	17.31
Maximum Power Current(Imp)	3.18
Open Circuit Voltage(Voc)	21.07
Short Circuit Current(Isc)	3.50
Cells Efficiency(%)	16.00
Module Efficiency(%)	12.35
Maximum System Voltage(V)	1000
Maximum Series Fuse Rating(A)	10
Power Tolerance	0~+3%
Pmax Temperature Coefficients(W/°C)	-0.470%
Voc Temperature Coefficients(V/°C)	-0.389%
Isc Temperature Coefficients(A/°C)	+0.057%
NOCT Nominal Operating Cell Temperature(°C)	47±2
Operating and Storage Temperature(°C)	-40~+85
Standard Test Condition(STC)	1.000W/m ² ;AM 1.5;25°C

Mechanical characteristrcs & Packaging

Cell Type	Poly-crystalline 156×65mm
No. of Cells	36(4×9)
Dimensions	678×657×35mm
Weight	5.0kgs
Front Glass	3.2mm high transmission,low iron,tempered glass
Frame	Anodized Aluminium Alloy
Junction box	IP65 Rated
Output cables	2.5mm ² Length 90mm, MC4 connector
Quantity/cartons	2pcs

Dimensions

55W多晶硅太阳能电池板 (657*678*35)

55W Poly solar panel (657*678*35)

单位:mm

Unit:mm

